

Normal hex nuts are quickly turned into **hand-held nuts!**

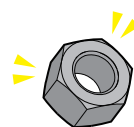
KNOB SATURN

NEW **KNOB SATURN**

English ver.

Problem

I want to grip and fasten it easily by hand!

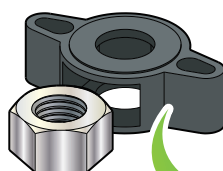


Well, I have a normal type of hex nut but...

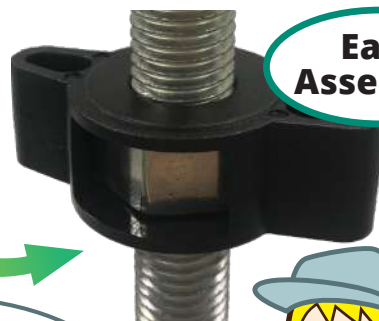


I wish there was an easy to use hand held nut!

Solution!



Just prepare the nut and **"KNOB SATURN"** to solve the problem!



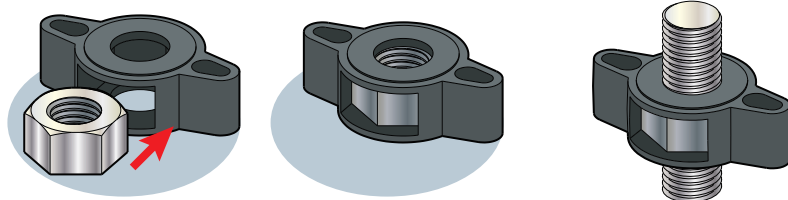
Easy Assembly



- No tools required, easy to tighten by hand
- Penetration type that can be used for long screws
- When Knob Saturn is removed, the nut can be reused as normal

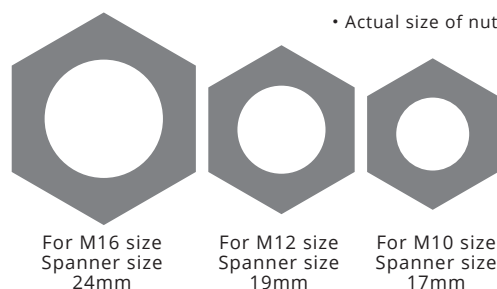
How to use

Notice:
Only suitable for Japanese JIS standard Hexagon nuts

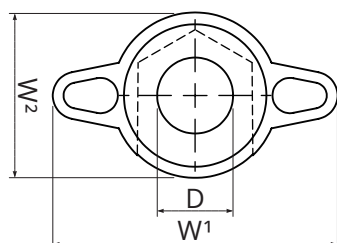
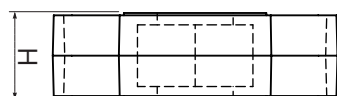


Just insert the nut into **KNOB SATURN** > Done!

Variations



Specifications



Material:Nylon 66

unit:mm

Size	Width(W ¹)	Width(W ²)	Thickness(H)	Thread(D)
M16	60	35	18	16
M12 (Reference exhibit)	48	27	15	12
M10 (Reference exhibit)	42	24	13	10

- This product is for hand tightening only. Using tools is not necessary
- Prepare hex nuts separately (For hex nut of JIS standard only)
- If cracks or chips occur, stop using immediately

Ohsato Co. Ltd. Space Creation-Product (SCP) Division

OHSATO

7-4-4 Minami-ku Uchiya Saitama-city Saitama 336-0034 Japan

TEL:+81 48 863 6411 FAX:+81 48 863 8459

<https://ohsato-web.co.jp/>

• In order to improve our products, changes may be made to the design (color, length/weight, price, etc) without prior announcement. Product color may differ slightly from the photos in the flyer.

Our new technology makes your life easier!